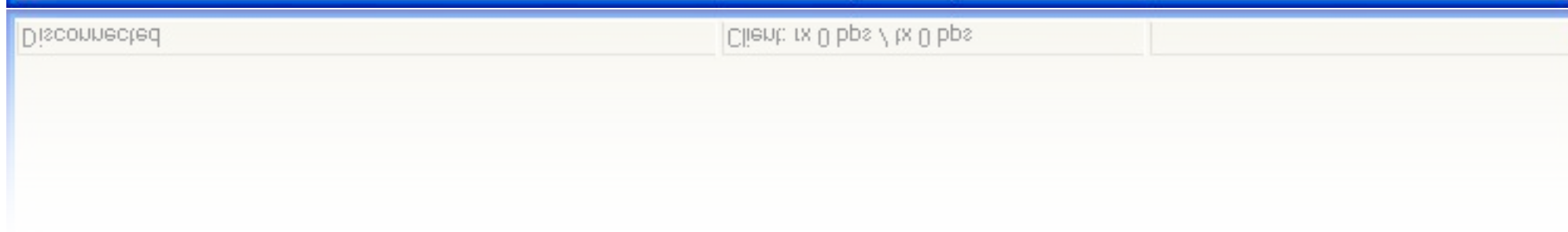
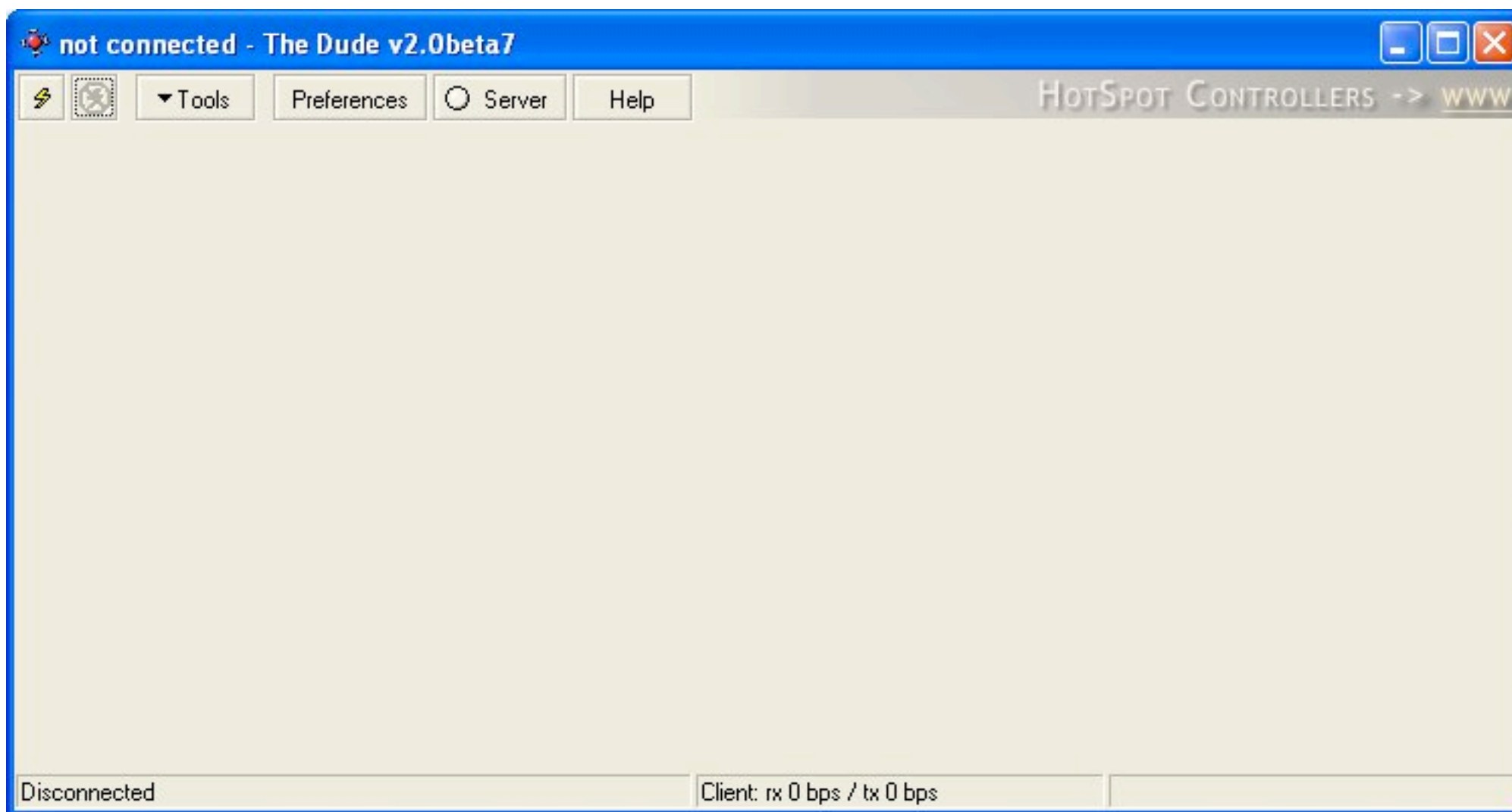
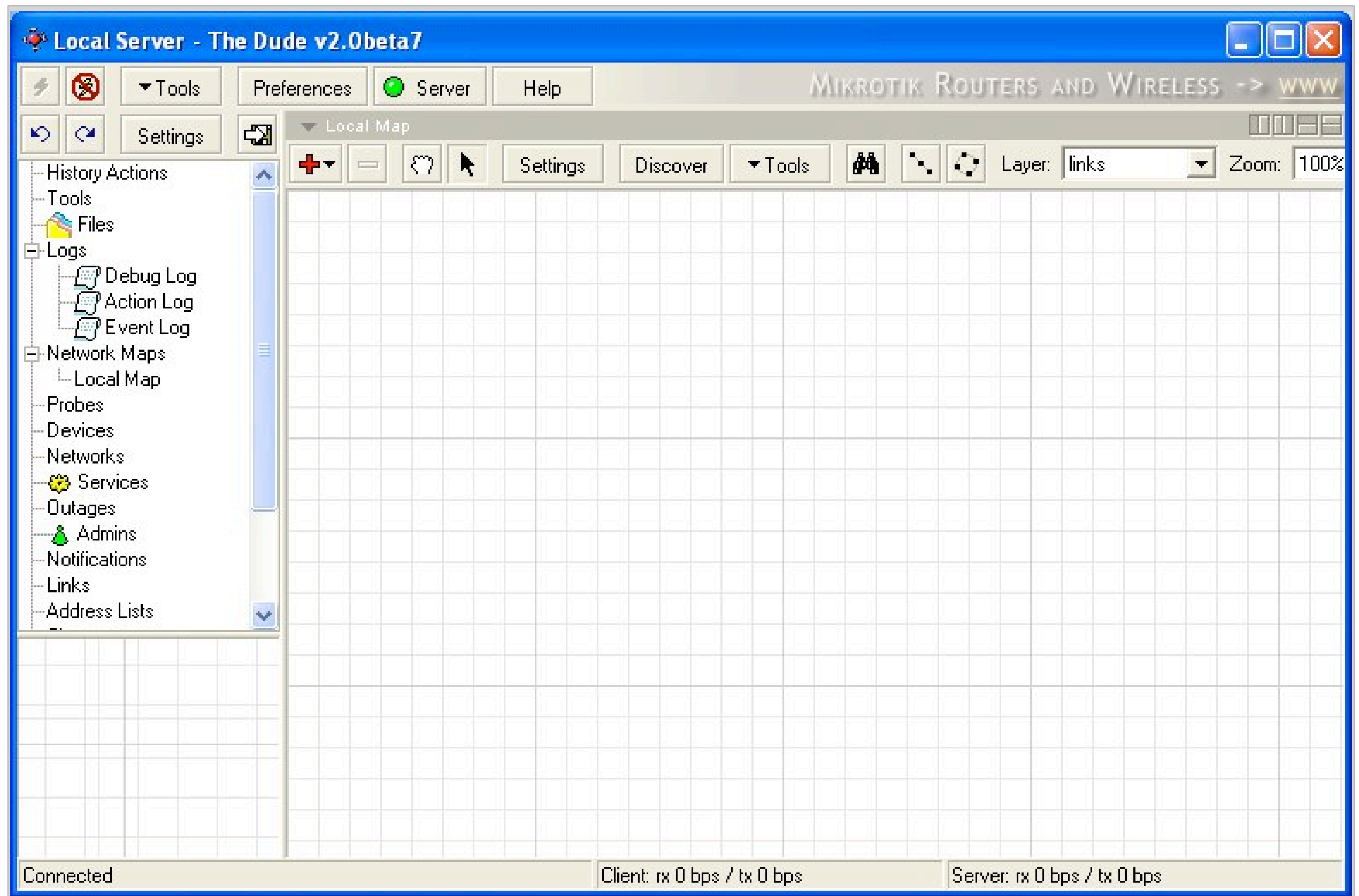
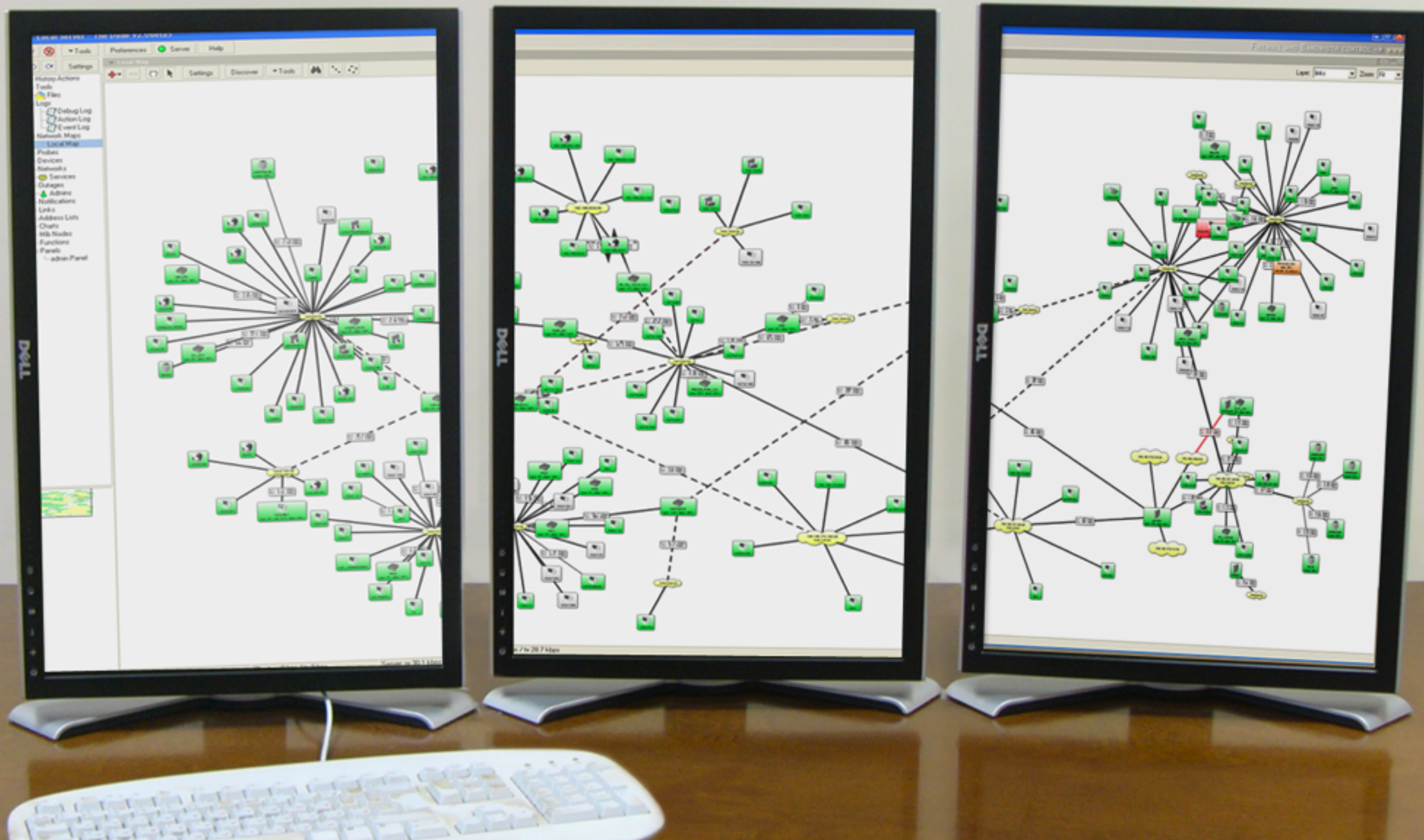


the Dude



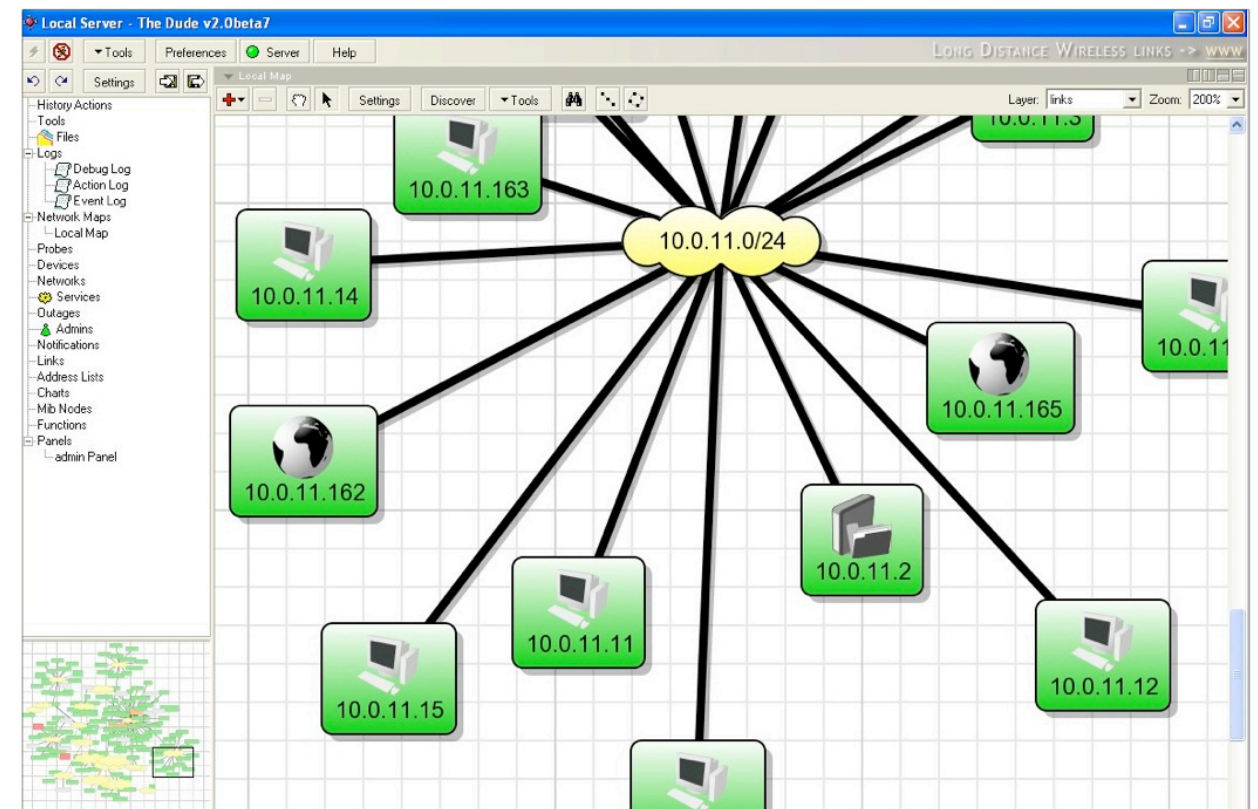
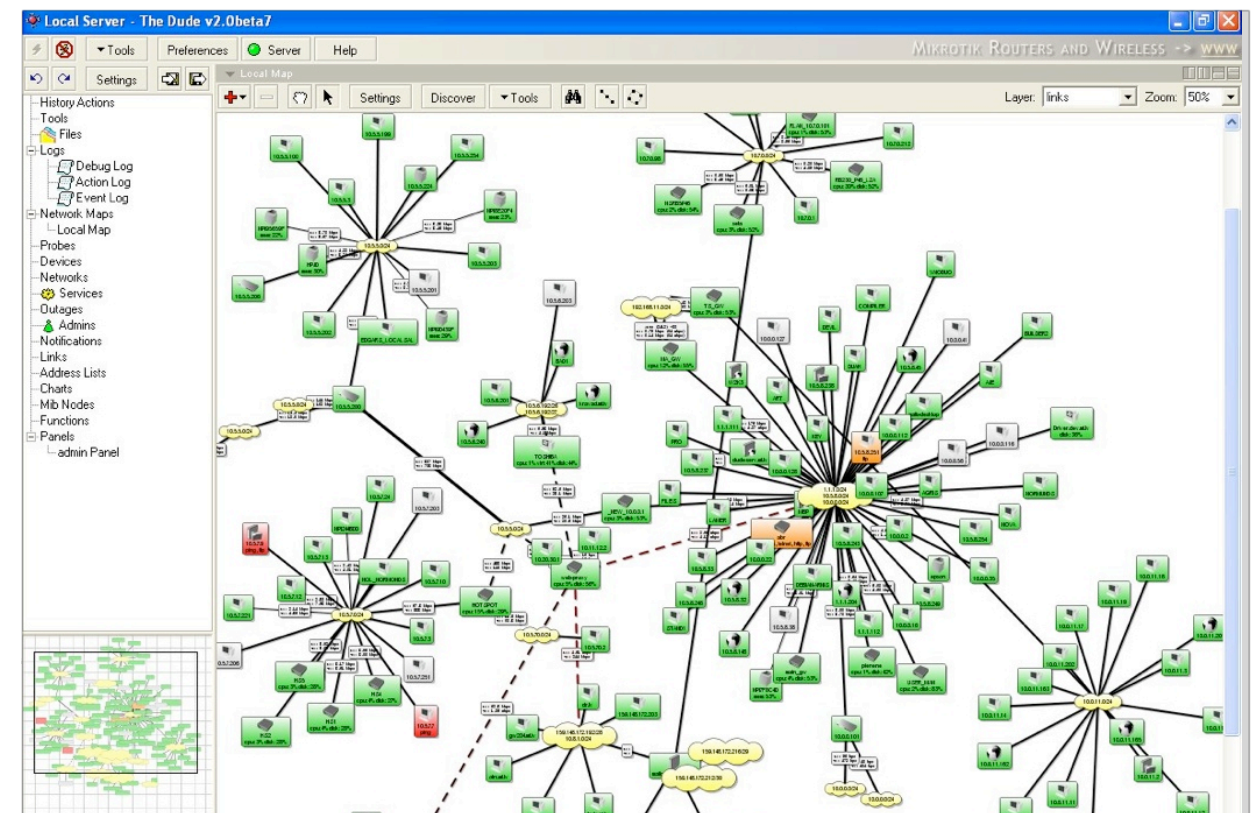
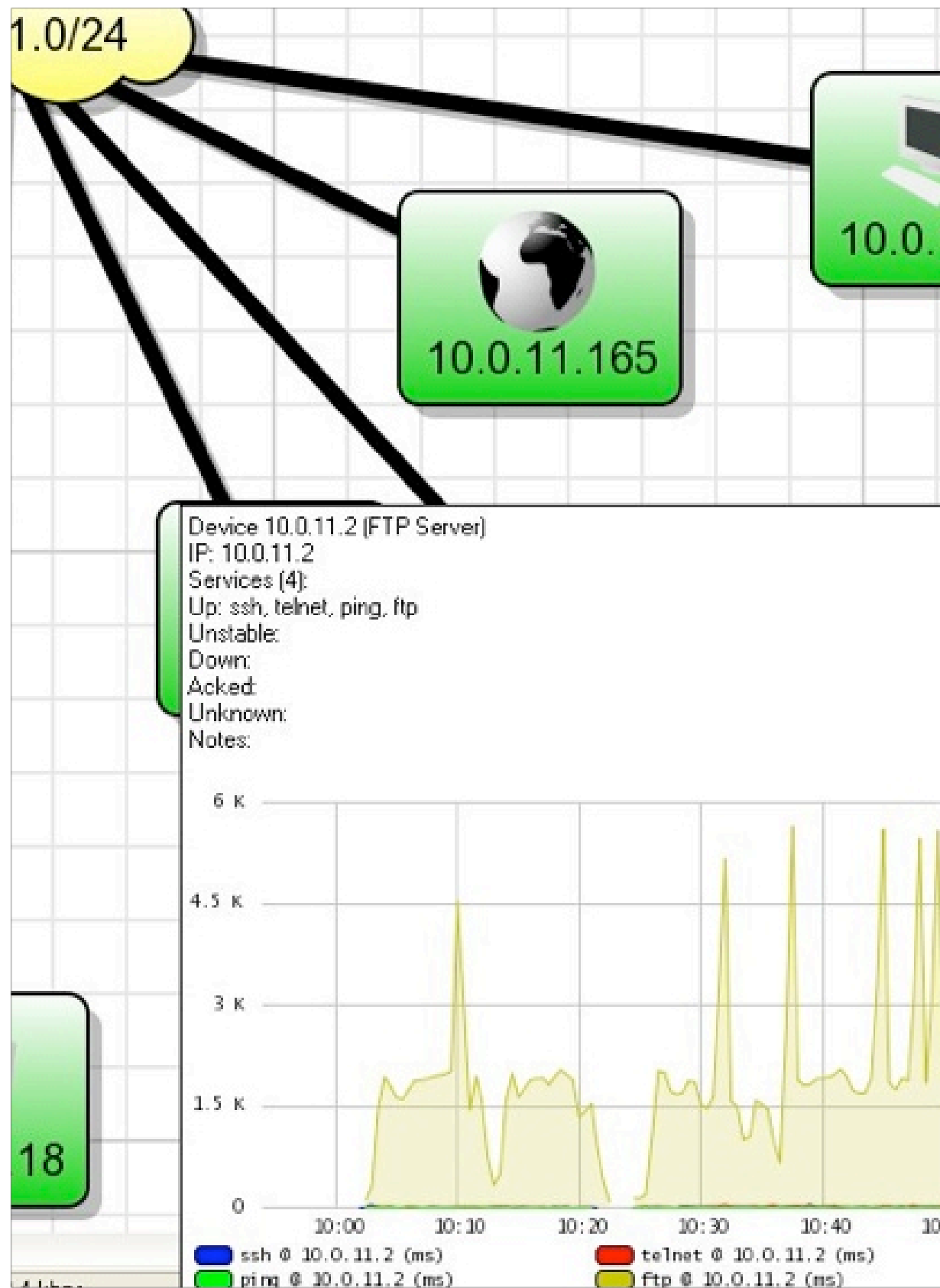




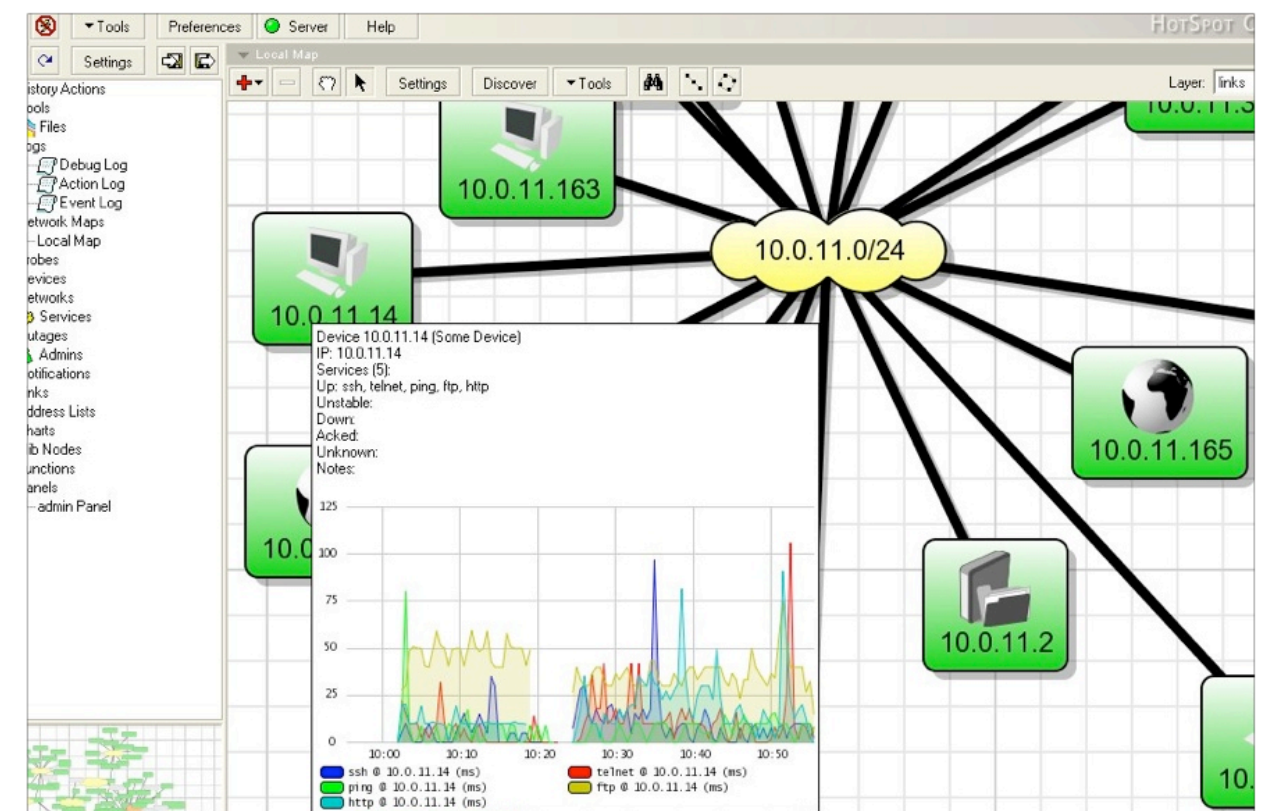
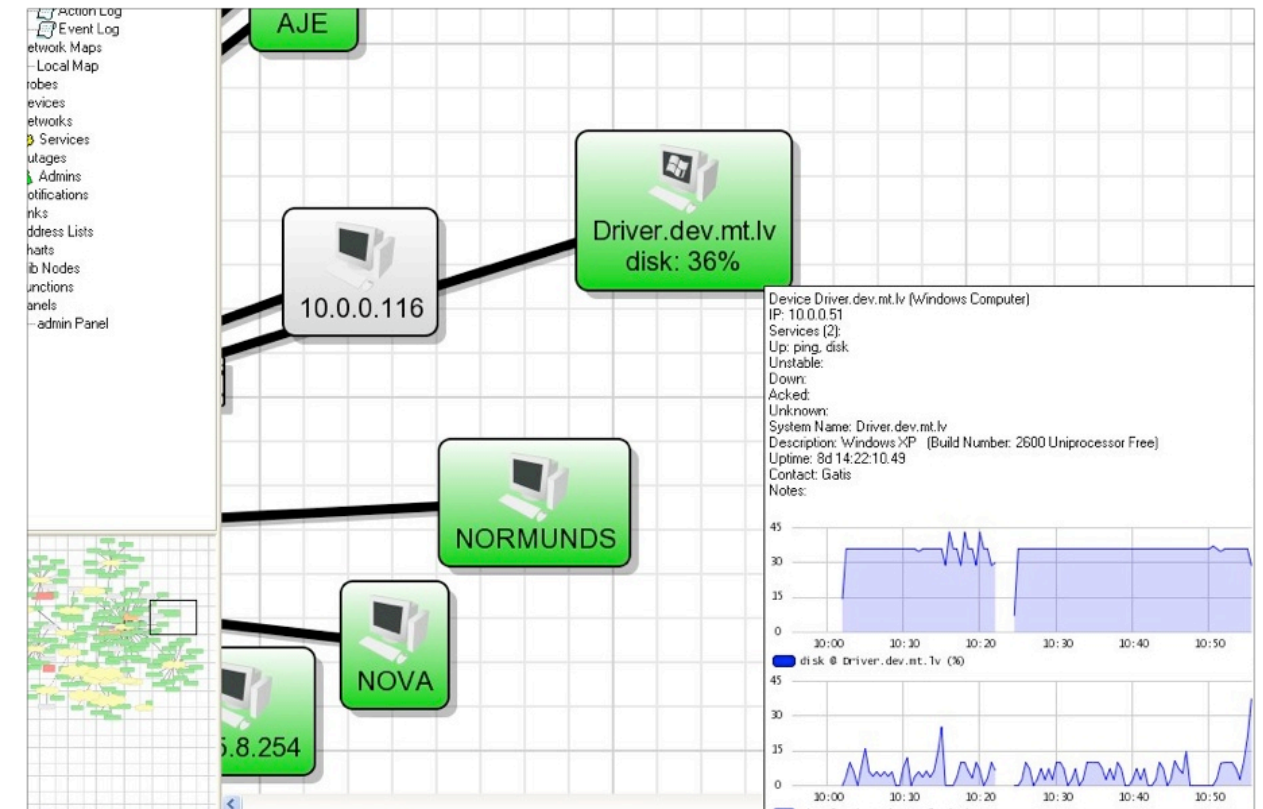
the Dude on a big scale

*imagine playing Quake with
these babies!*

Features

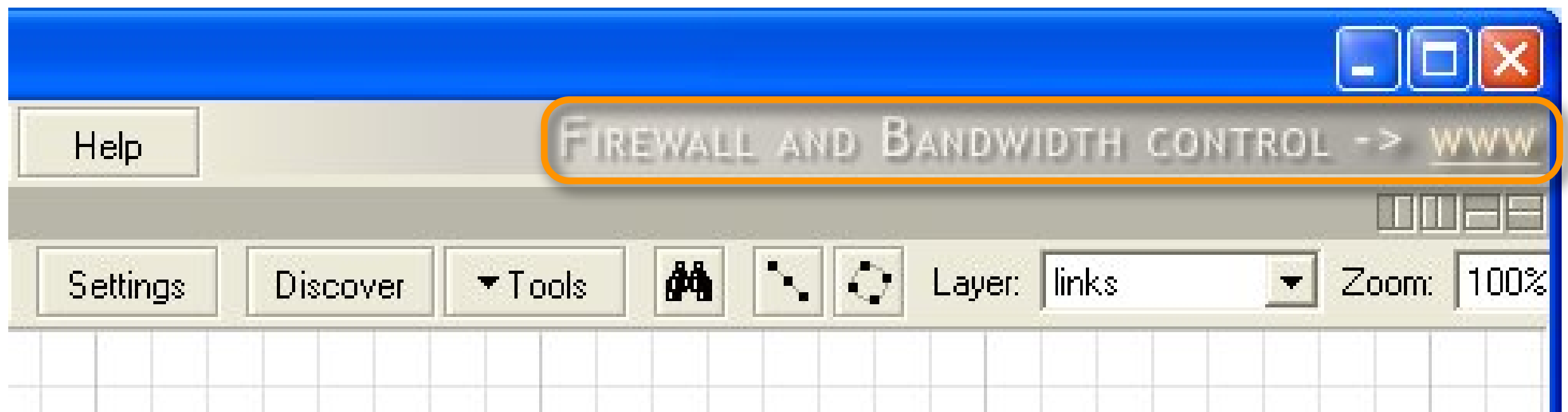
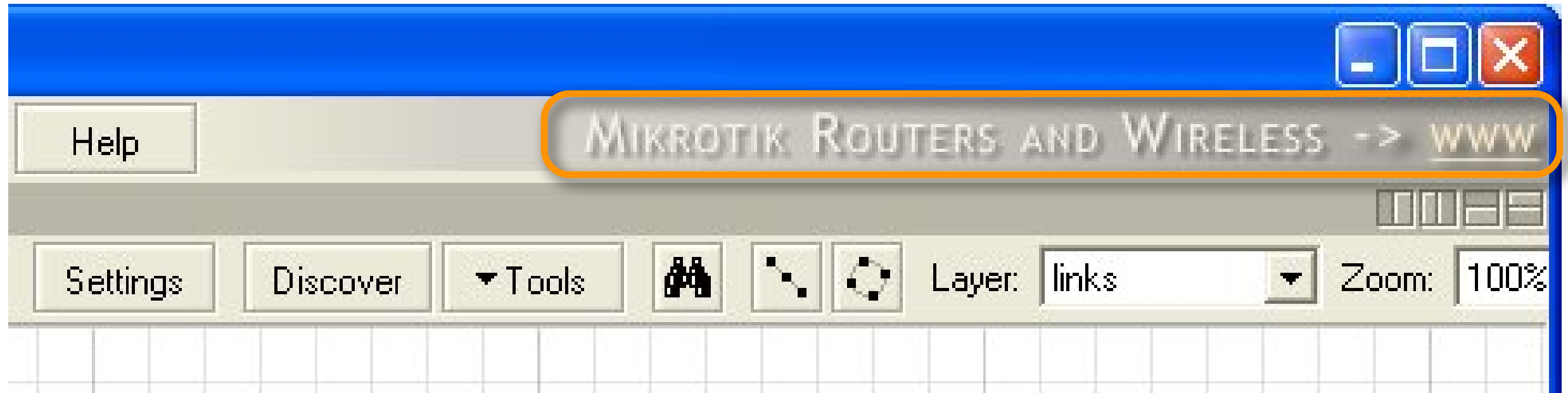


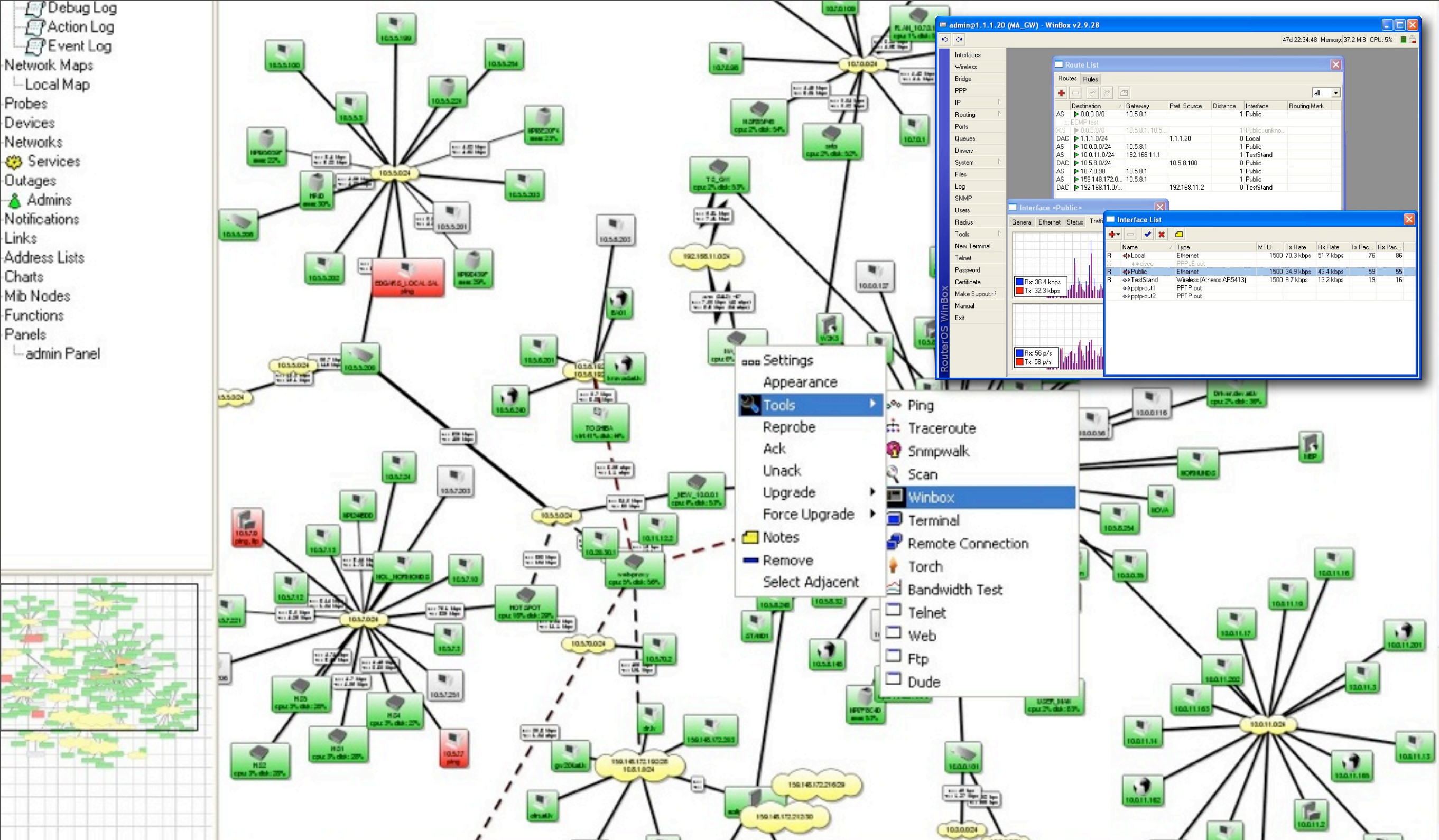
Multiple zoom levels and pop-up information windows



Different graphs for different equipment types

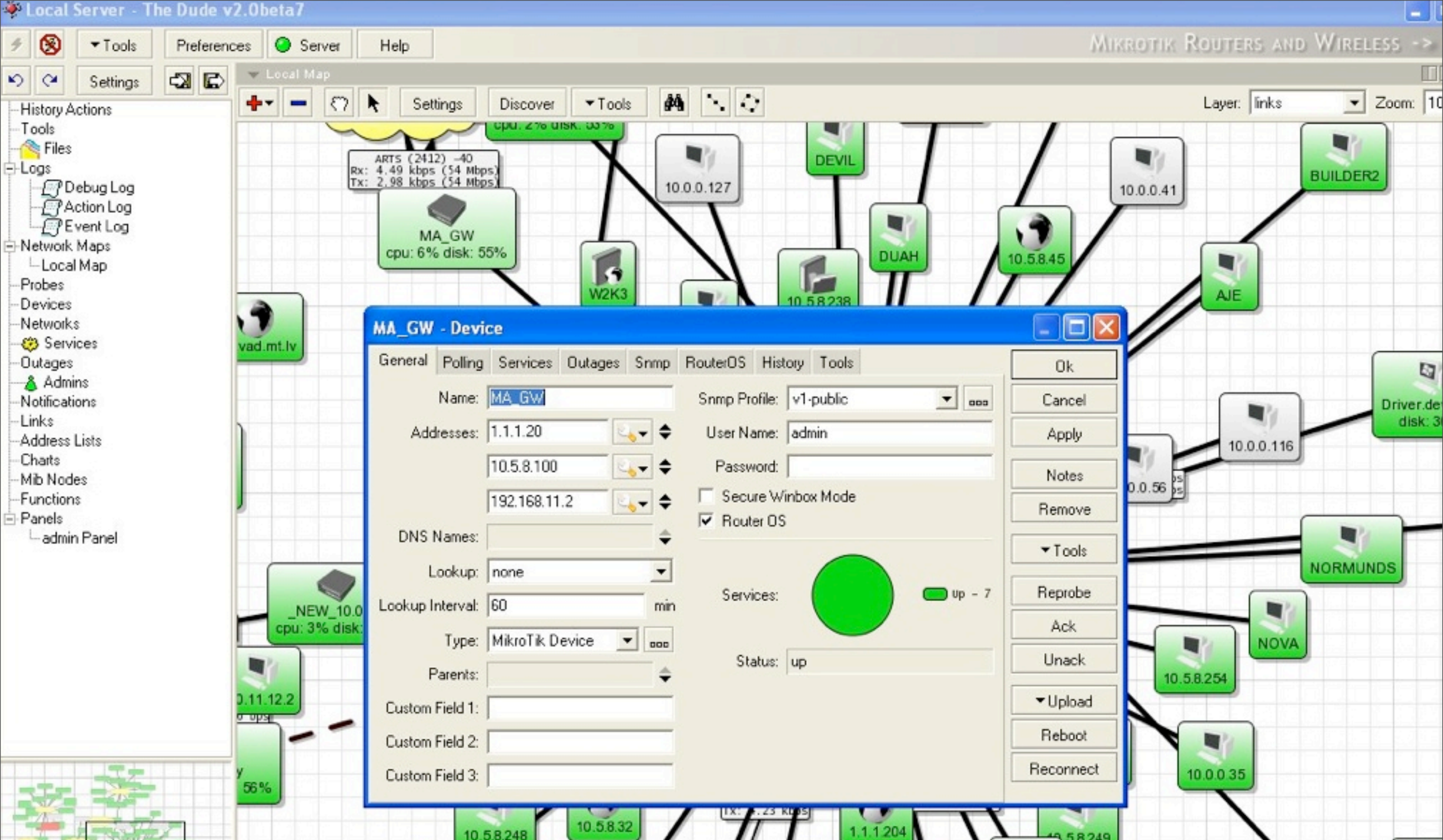
Dude displays MikroTik advertisements !





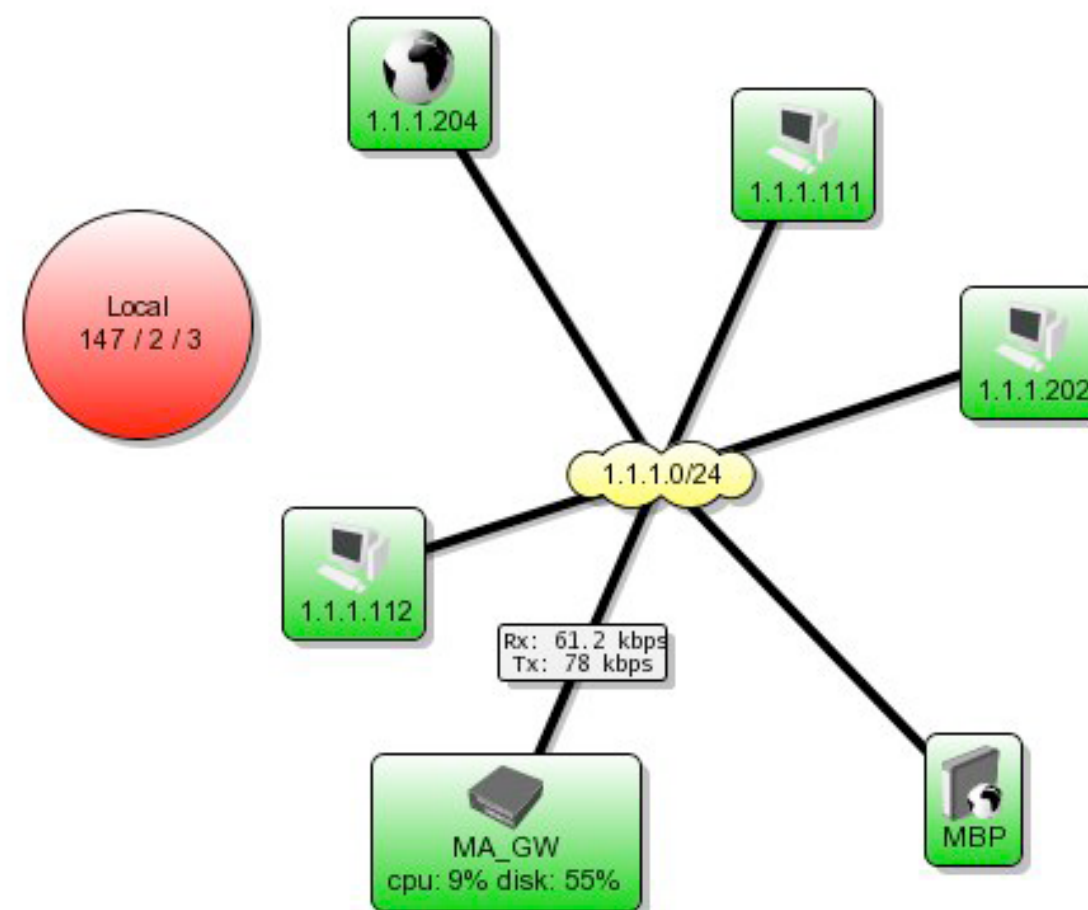
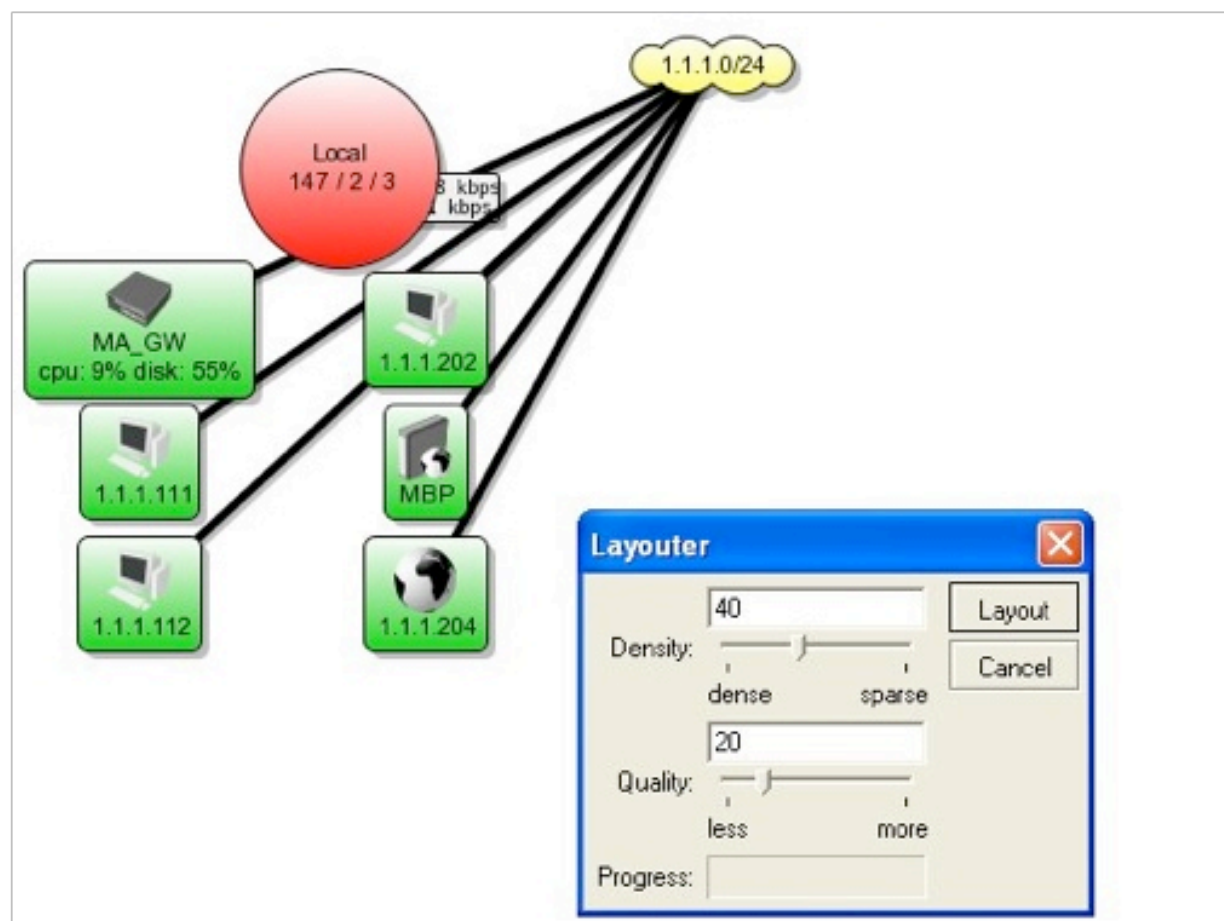
All tools are a click away

and you can add your own !

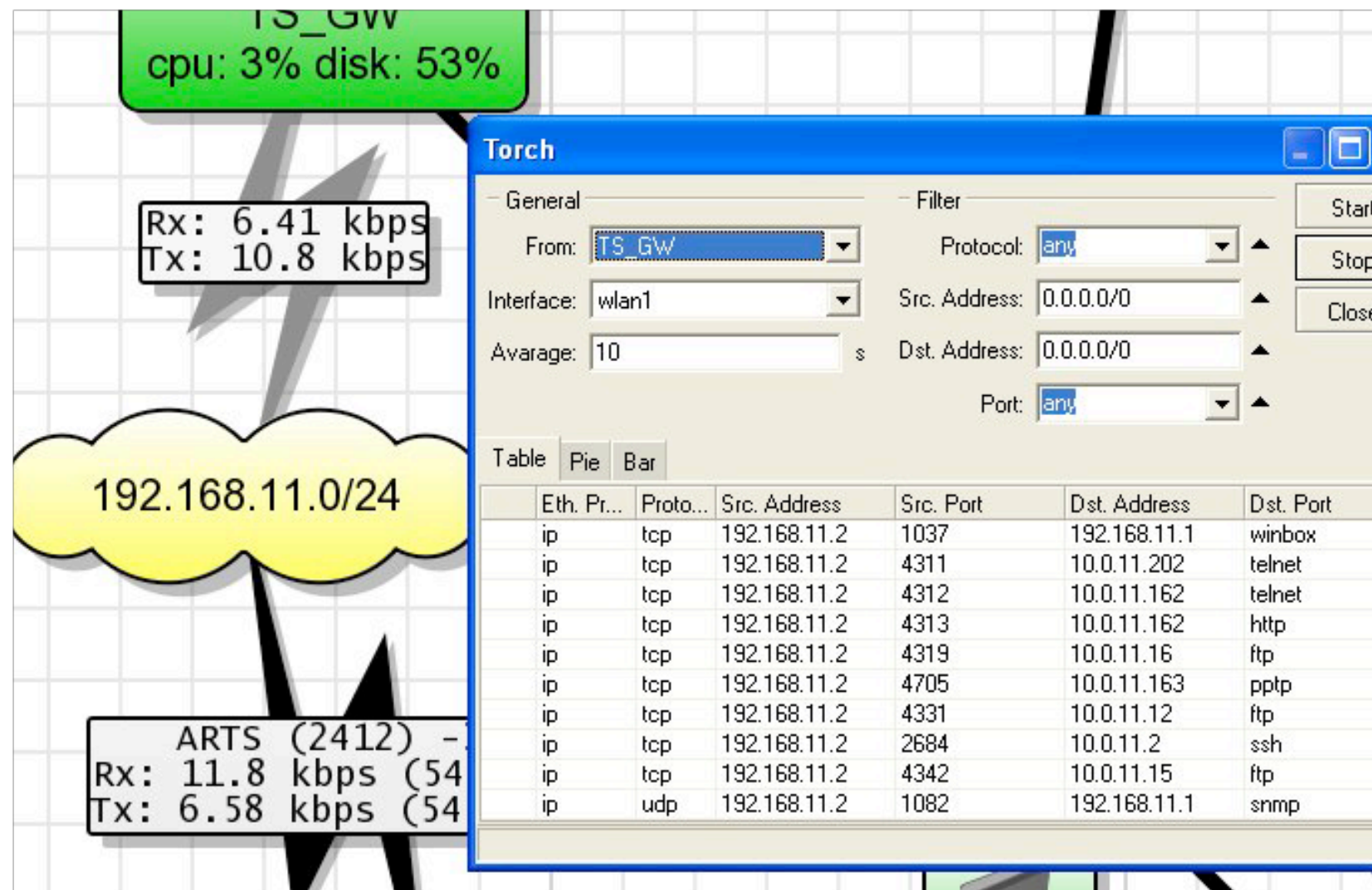
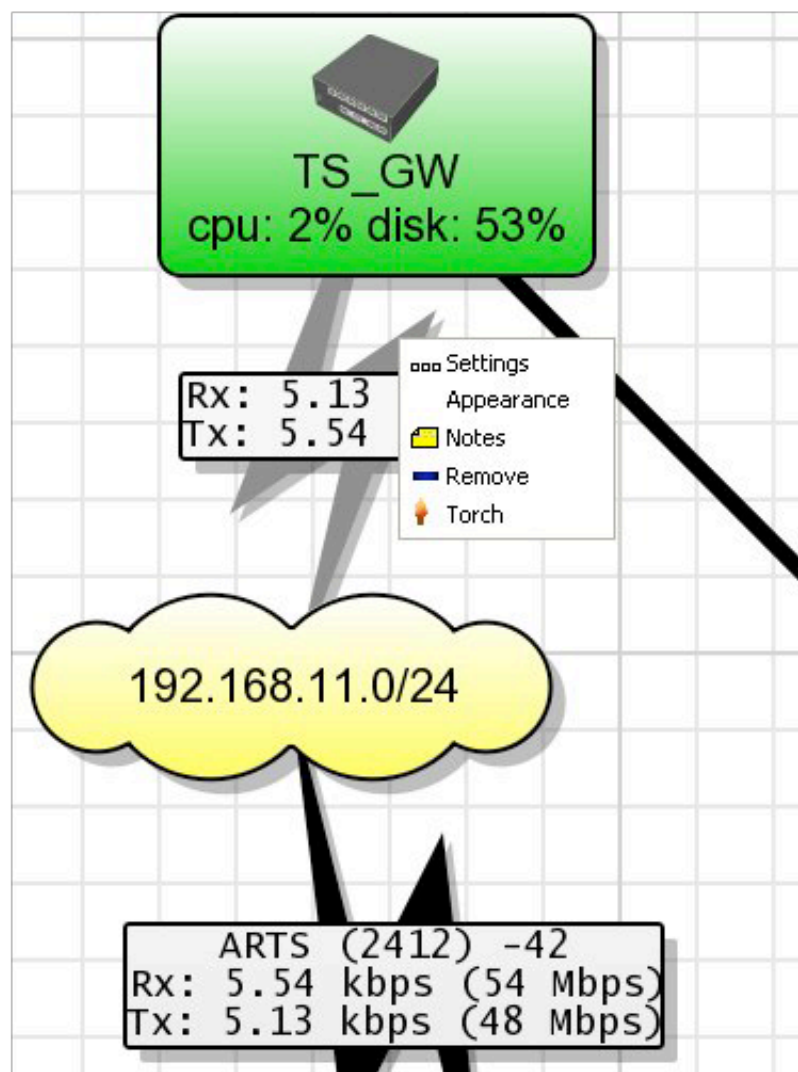


Store your authentication
settings in one place

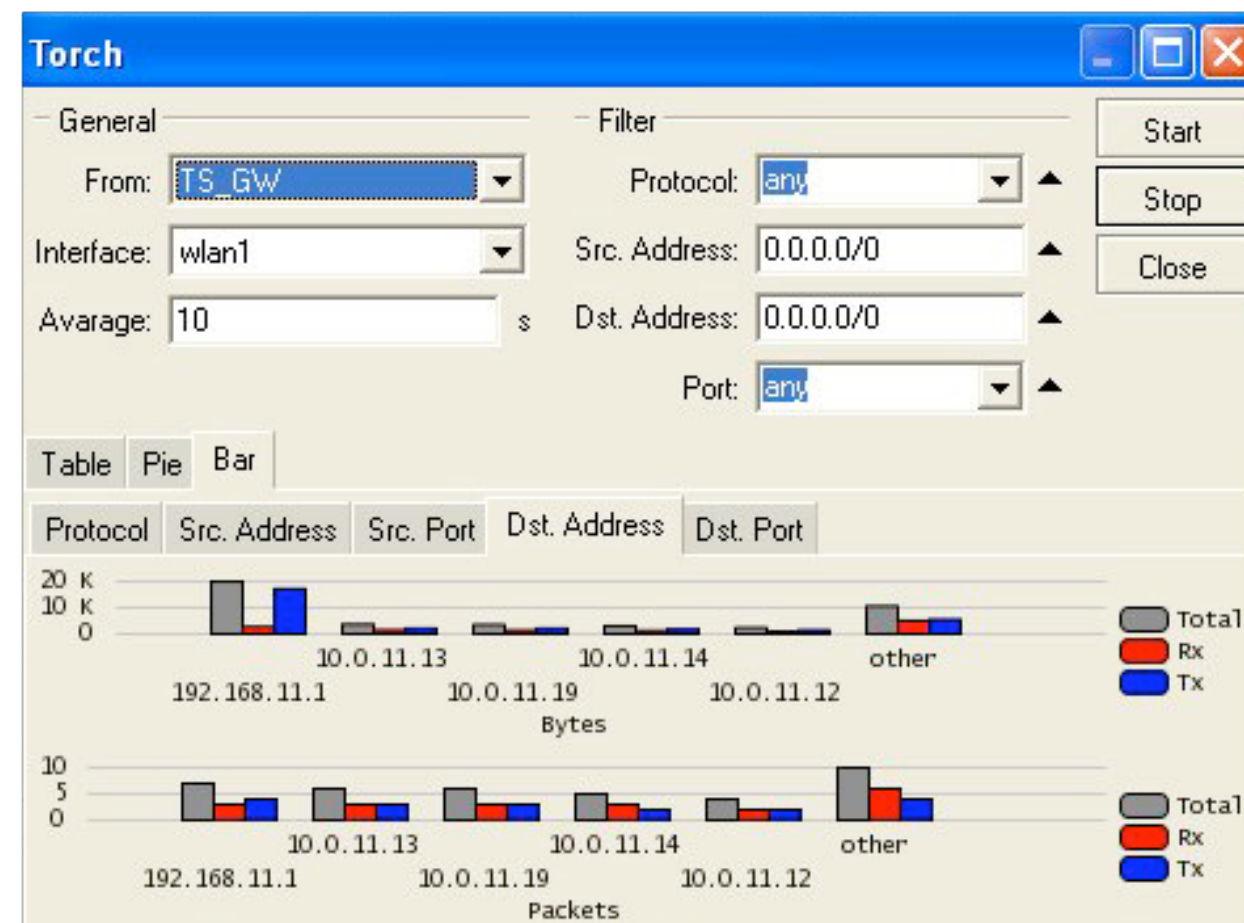
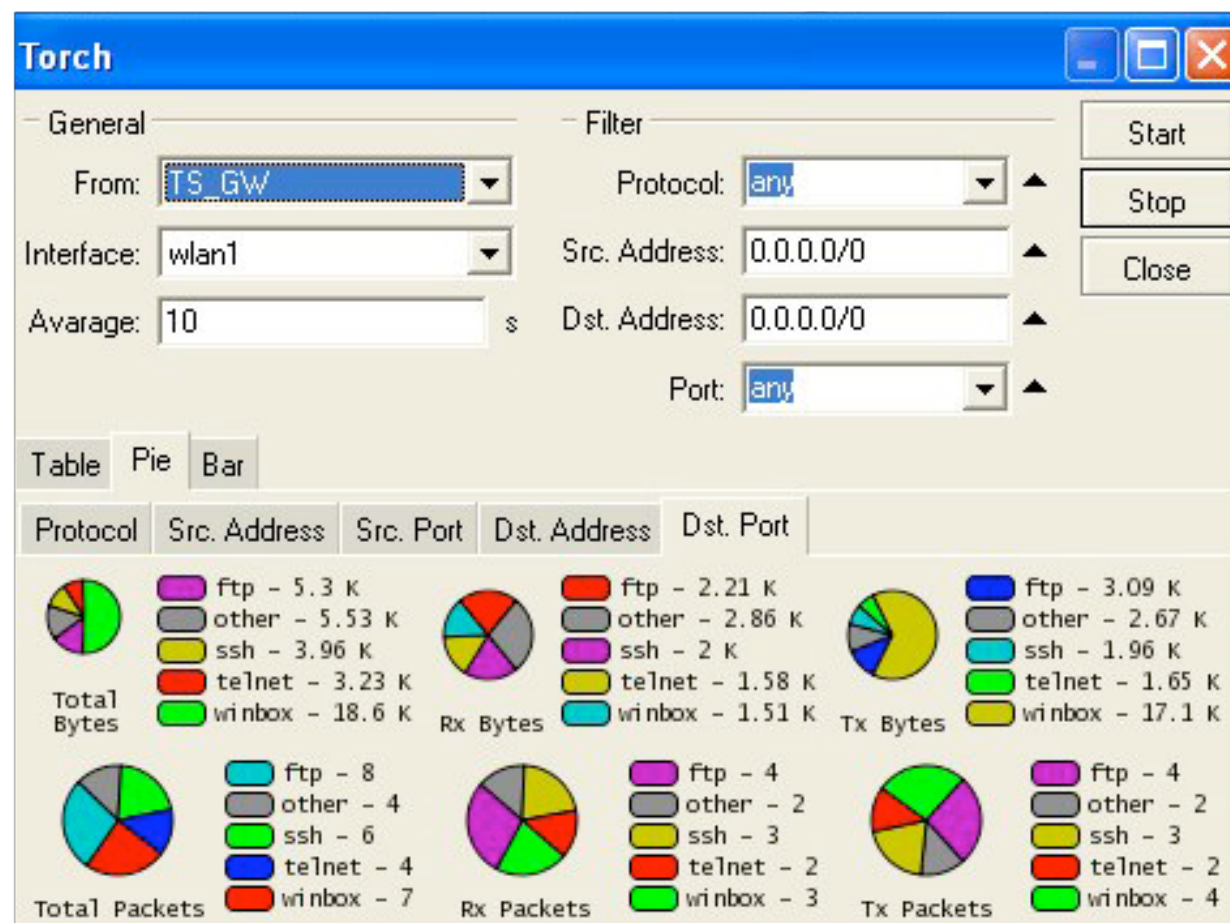
all tools are able to use them



Pretty layout in seconds



What's going through your links?



Torch can show you everything (well, almost)

HotSPOT CONTROLLERS -> WY

Tools Preferences Server Help

Settings

History Actions

Tools

Files

Logs

- Debug Log
- Action Log
- Event Log

Network Maps

- Local Map
- Clients Map

Probes

Devices

Networks

Services

Outages

Admins

Notifications

Links

Address Lists

Charts

Mib Nodes

Functions

Panels

- admin Panel

Devices

All Tree RouterOS Types

Status: all Type: all Map: all

Name	Addresses	Type	Maps	Services Down	Notes
1.1.1.111	1.1.1.111	Some Device	Local		
1.1.1.111	1.1.1.111	Some Device	Clients		
1.1.1.112	1.1.1.112	Some Device	Local		
1.1.1.112	1.1.1.112	Some Device	Clients		
1.1.1.202	1.1.1.202	Some Device	Clients		
1.1.1.204	1.1.1.204	Web Server	Clients		
1.1.1.204	1.1.1.204	Web Server	Local		
10.0.0.101	10.0.0.101	Switch	Local		
10.0.0.107	10.0.0.107	Some Device	Local		
10.0.0.112	10.0.0.112	Some Device	Local		
10.0.0.116	10.0.0.116	Some Device	Local		
10.0.0.127	10.0.0.127	Some Device	Local		
10.0.0.128	10.0.0.128	Some Device	Local		
10.0.0.16	10.0.0.16	Some Device	Local		
10.0.0.2	10.0.0.2	Some Device	Local		
10.0.0.22	10.0.0.22	Some Device	Local		
10.0.0.35	10.0.0.35	Some Device	Local		
10.0.0.41	10.0.0.41	Some Device	Local		
10.0.0.56	10.0.0.56	Some Device	Local		
10.0.11.11	10.0.11.11	Some Device	Local		

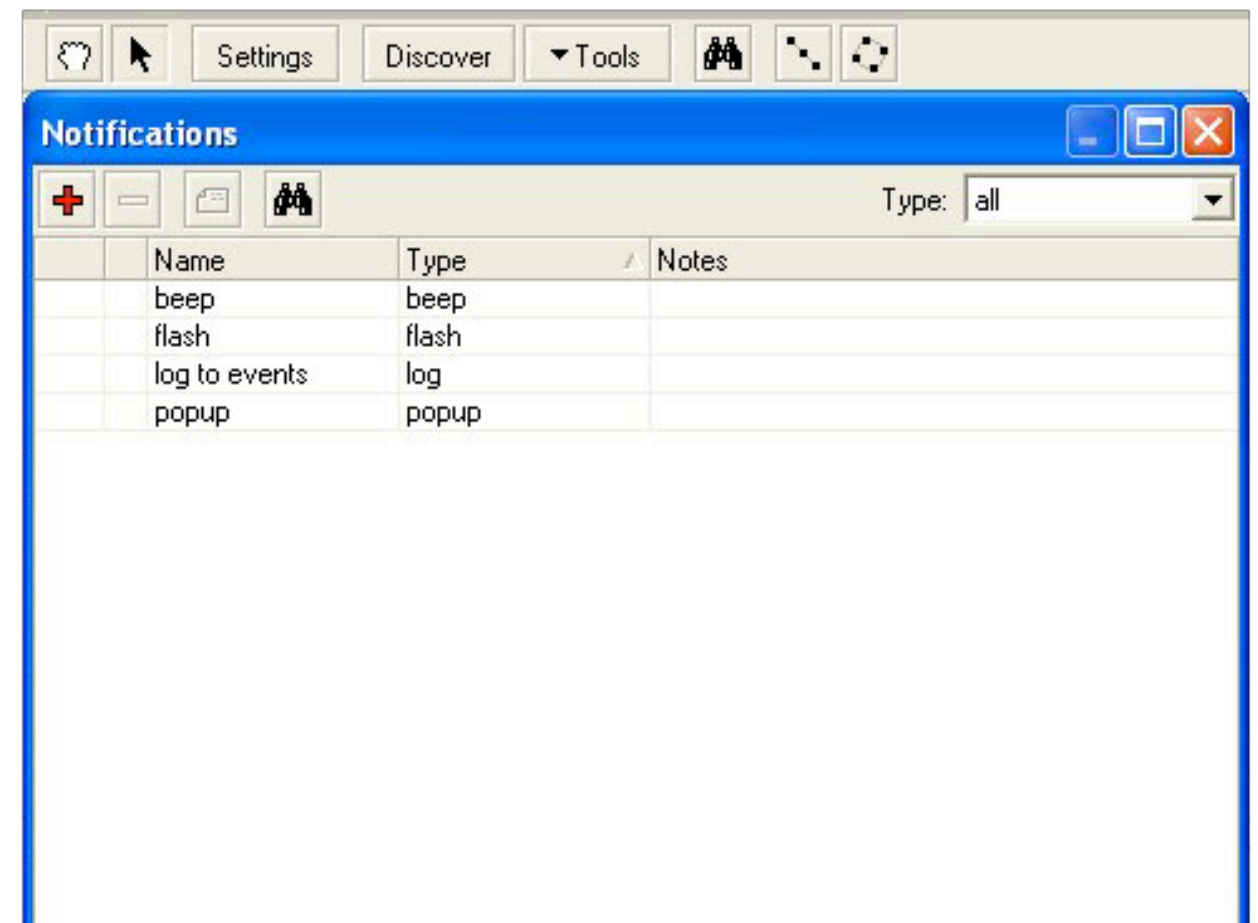
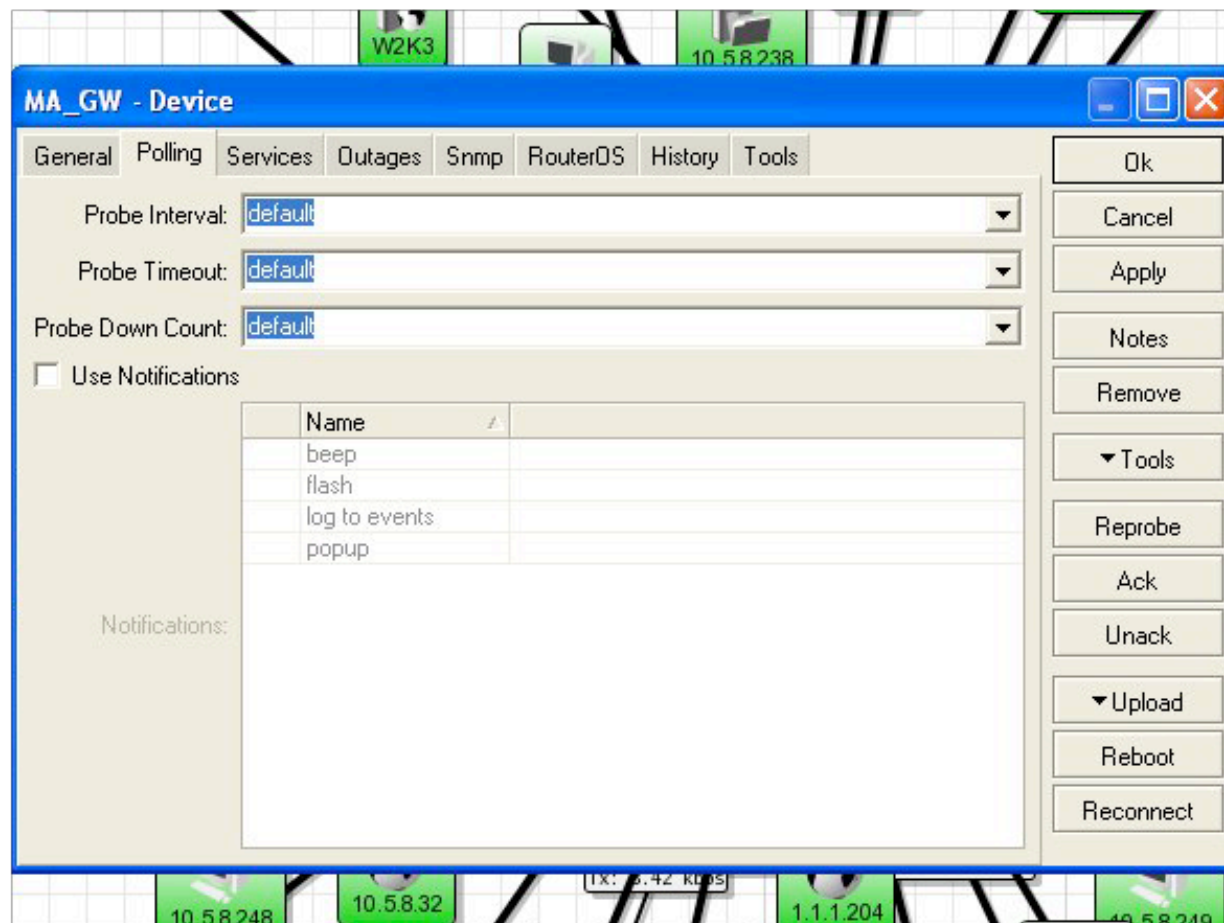
Clients Map

Settings Discover Tools

Layer: links Zoom: 100%

Rx: 108 kbps
Tx: 109 kbps

Multiple windows - each with its own search button



Device polling with custom notifications

Customizable

The screenshot displays the 'Local Server - The Dude v2.0beta7' interface. On the left is a sidebar with a tree view containing categories like History Actions, Tools, Files, Logs, Network Maps, Local Map, Clients Map, Probes, Devices, Networks, Services, Outages, Admins, Notifications, Links, Address Lists, Charts, Mib Nodes, Functions, and Panels. The 'Probes' category is selected. The main window shows a 'Clients Map' with two client icons labeled '1.1.1.204' and '1.1.1.111'. A 'Probes' window is open, showing a table of configured probes. The 'disk' probe is highlighted. A configuration dialog for the 'disk' probe is also open, showing its settings.

Probes

Name	Type	Notes
dns	DNS	
disk	Function	
virtual memory	Function	
memory	Function	
cpu	Function	
ping	ICMP	
rnd 50:50	Random	
mikrotik	SNMP	This service is useful
windows	SNMP	This service is useful
hp jetdirect	SNMP	This service is useful
switch	SNMP	This service is useful
router	SNMP	This service is useful
telnet	TCP	
smtp	TCP	
time	TCP	
gopher	TCP	
http	TCP	
pop3	TCP	
nntp	TCP	
imap4	TCP	
printer	TCP	
dude	TCP	
ssh	TCP	
ftp	TCP	
tcp echo	TCP	
radius	UDP	

disk - Probe

Name: disk

Type: Function

Performs custom functions to decide if service is available and up. If up graphs value of another function

Should return true if service is available

Available: `hdd_usage() > 0`

If return string is empty then service is assumed up

Error: ""

Should return value to graph if up

Value: `hdd_usage()`

Unit: %

Rate: none

Buttons: Ok, Cancel, Apply, Notes, Copy, Remove

And more ...

- *auto network discovery*
- *works with any type or brand of device*
- *SVG icons for devices, and supports custom icons and backgrounds*
- *easy installation and usage*
- *draw your own maps*
- *supports SNMP, ICMP, DNS and TCP monitoring*
- *and more ...*